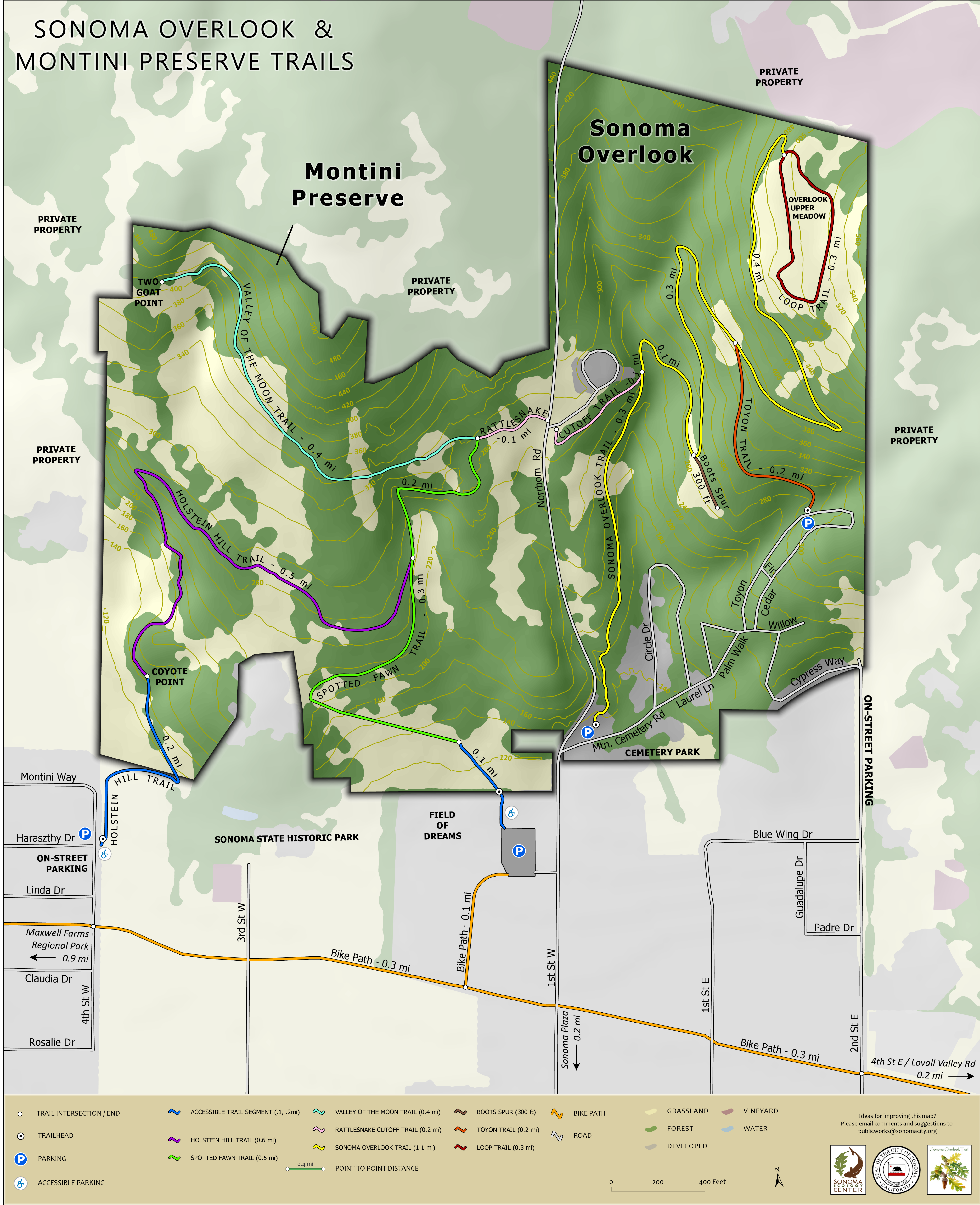


SONOMA OVERLOOK & MONTINI PRESERVE TRAILS



○ TRAIL INTERSECTION / END	ACCESSIBLE TRAIL SEGMENT (.1, .2mi)	VALLEY OF THE MOON TRAIL (0.4 mi)	BOOTS SPUR (300 ft)	BIKE PATH	GRASSLAND	VINEYARD
⊙ TRAILHEAD	HOLSTEIN HILL TRAIL (0.6 mi)	RATTLESNAKE CUTOFF TRAIL (0.2 mi)	TOYON TRAIL (0.2 mi)	ROAD	FOREST	WATER
PARKING	SPOTTED FAWN TRAIL (0.5 mi)	SONOMA OVERLOOK TRAIL (1.1 mi)	LOOP TRAIL (0.3 mi)		DEVELOPED	
ACCESSIBLE PARKING	0.4 mi POINT TO POINT DISTANCE					

0 200 400 Feet

Scale bar and north arrow.

Ideas for improving this map?
Please email comments and suggestions to
publicworks@sonomacity.org